

The Decision Tree & Collection Management

Karen Thomas

Suzy Cheeke

Jan Davey

Aims:

- What is a decision tree?
- How can it be used in collection management?
- Creating a tree for your library

Decision Tree

“A decision tree is a graph that uses a branching method to illustrate every possible outcome of a decision”

WhatIs.com

Why make a decision tree?

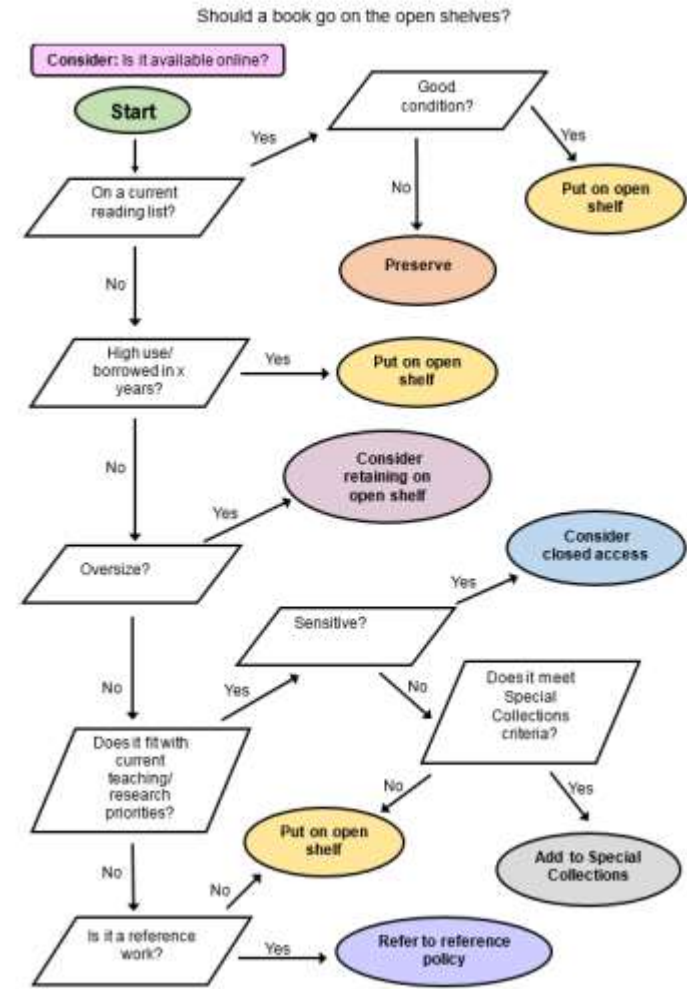
- Space at a premium in libraries so collections must “earn their keep”
- Need to make informed retention decisions
- Essential to keep our stakeholders on board
- Useful tool to reassure and explain

Key Decision Strands

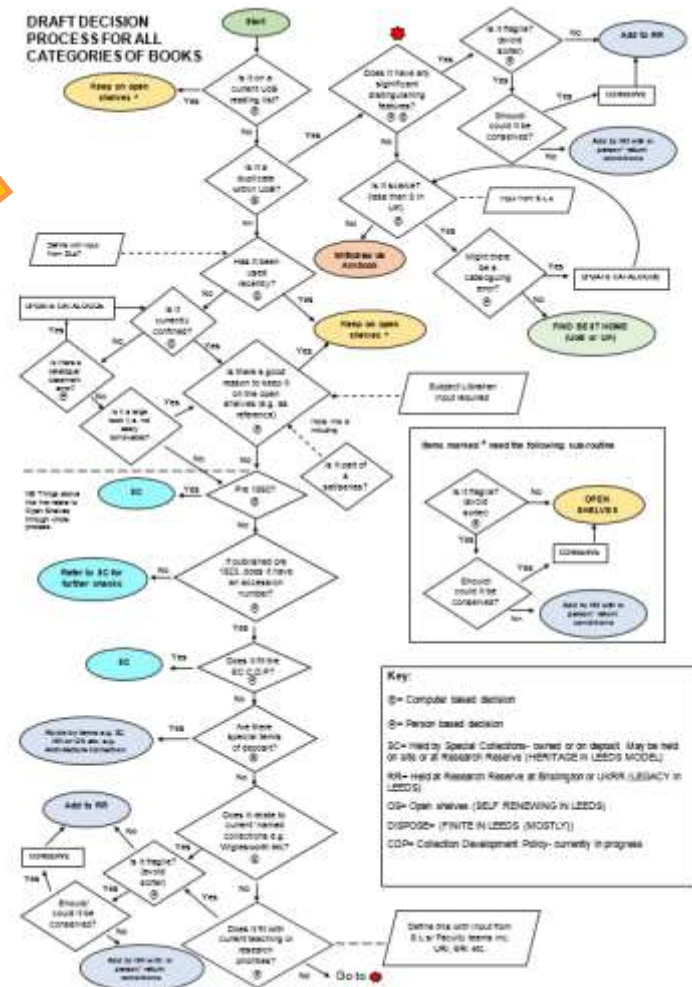
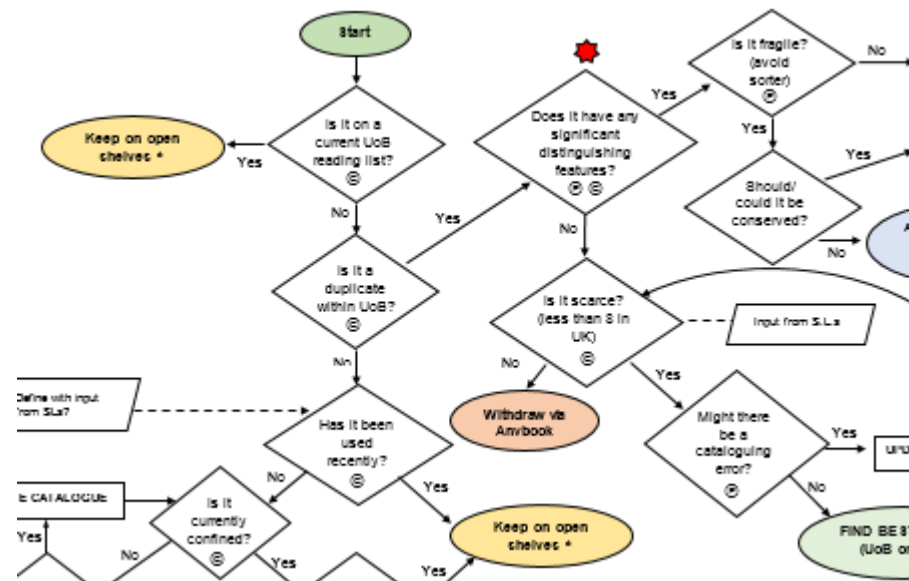
- Keep on open shelves
- Treat as a special collection
- Safe to relegate

Results: Keep

- The second attempt was a little more sophisticated



Master Tree



Now over to you...

- In your allocated category groups decide what criteria you would use to decide what to keep on open shelves or what to treat as a special collection, or what to relegate
- Rank your criteria in priority order
- Now look at Bristol's tree, try to follow the decision path
- What did we miss? What did we include that you didn't?
- Have a look at what other groups thought..(we will collate the information and share it with you after the event)

Next steps

- At Bristol, making the decision tree acted as a springboard for further action
- We tested the decisions with library colleagues
- We tested scenarios and translated them in withdrawal/retention statistics
- Considered what these decisions mean for the size of the library collections and where they should be housed